

Shock Sensor for Tire Pressure Monitoring System

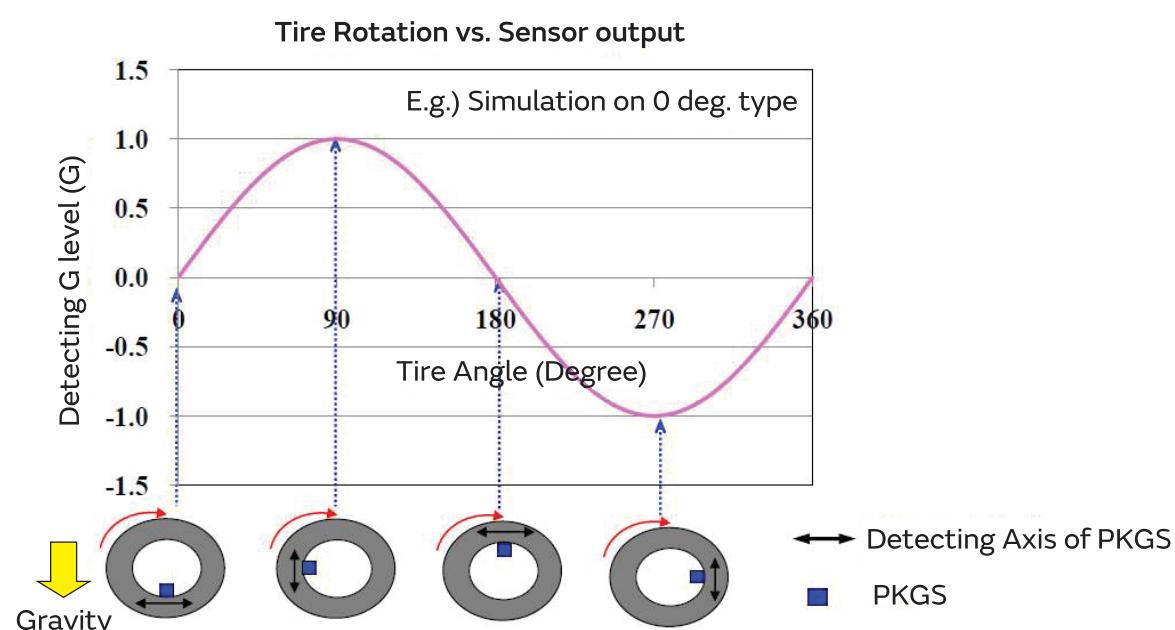
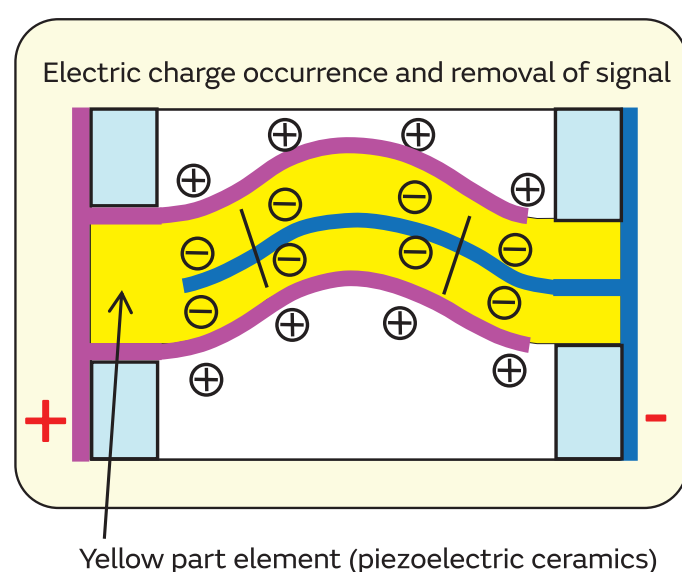
Turning ON-OFF the system according to car speed
Great contribution to achieve low-power consumption

By detecting the speed of the car, shock sensor controls TPMS start or end, and contributes to low power consumption.



Principle

- Piezoelectric effect of sensor device (piezoelectric ceramics) generates electric charge
- It detects the change of gravity (acceleration) according to the tire rotations
- System will be turned off when below set frequency, in slow speed condition or stopped condition



Specifications

Size 4.8 x 2.3 x 1.3mm

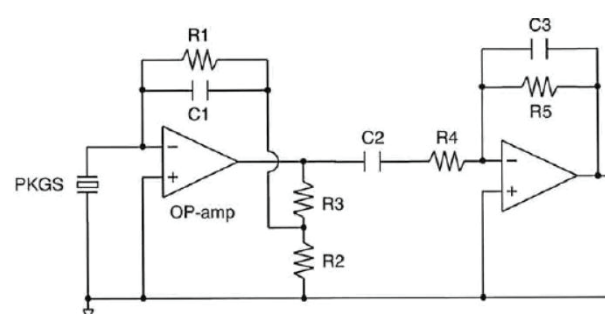
● Circuit, output vs frequency characteristic

Electrical Characteristics

- Wide Detection Range
- Low Power Consumption

Others

- Small Size
- High Reliabilities



- Part No: PKGS-25TA
- 2 steps HPF & 1 step LPF
- TOTAL gain: Approximately 100dB

The system will turn off when travelling in slow speed.
 (Approximately 10km/h~ any configure setting)

